



CALIFORNIA STATE UNIVERSITY
Stanislaus

As a response to Executive Order 1110, the CSUS Mathematics Department identified the stretched course model as our method for delivering content to incoming first-year students who were designated as needing support. As a result, two distinct pathways for General Education courses were created, based on whether a student needs a supported Area B4 course or not. The attached documents indicate the six distinct pathways for supported and non-supported classes, as well as which supported course a student in a particular major should take as their first mathematics course.

At the same time, the Mathematics Department implemented an assessment test as a means of addressing the high DFW rates in our Precalculus (Math 1100) and Calculus I (Math 1410) courses. Any student who does not require supported classes and does not possess college credit for college algebra, trigonometry, precalculus, or calculus must either begin at College Algebra (Math 1070) or earn a qualifying score on our assessment test to start in Trigonometry (Math 1080), Precalculus, or Calculus I. Students requiring support are not eligible to attempt our assessment exam.

Our supported math course structure and our assessment exam were implemented at the beginning of the 2018-19 Academic Year, and anecdotally, we believe we are noticing declining DFW rates. While our institutional research group is analyzing the data from our supported math courses, our department is currently examining the effectiveness of the assessment exam and the student success in the classes in which students are placed by the assessment. A department faculty member, Dr. Brian Jue, is currently on a sabbatical to perform this assessment study, and we hope to have data to work with in the next few months that will inform our next steps.

Mathematics Department | College of Science

One University Circle | S107 | Turlock, CA 95382 | T 209.667.3461 | csustan.edu/math

A proud member of the 23-campus California State University system.

ENGAGING · EMPOWERING · TRANSFORMING

Assessment Flow Chart

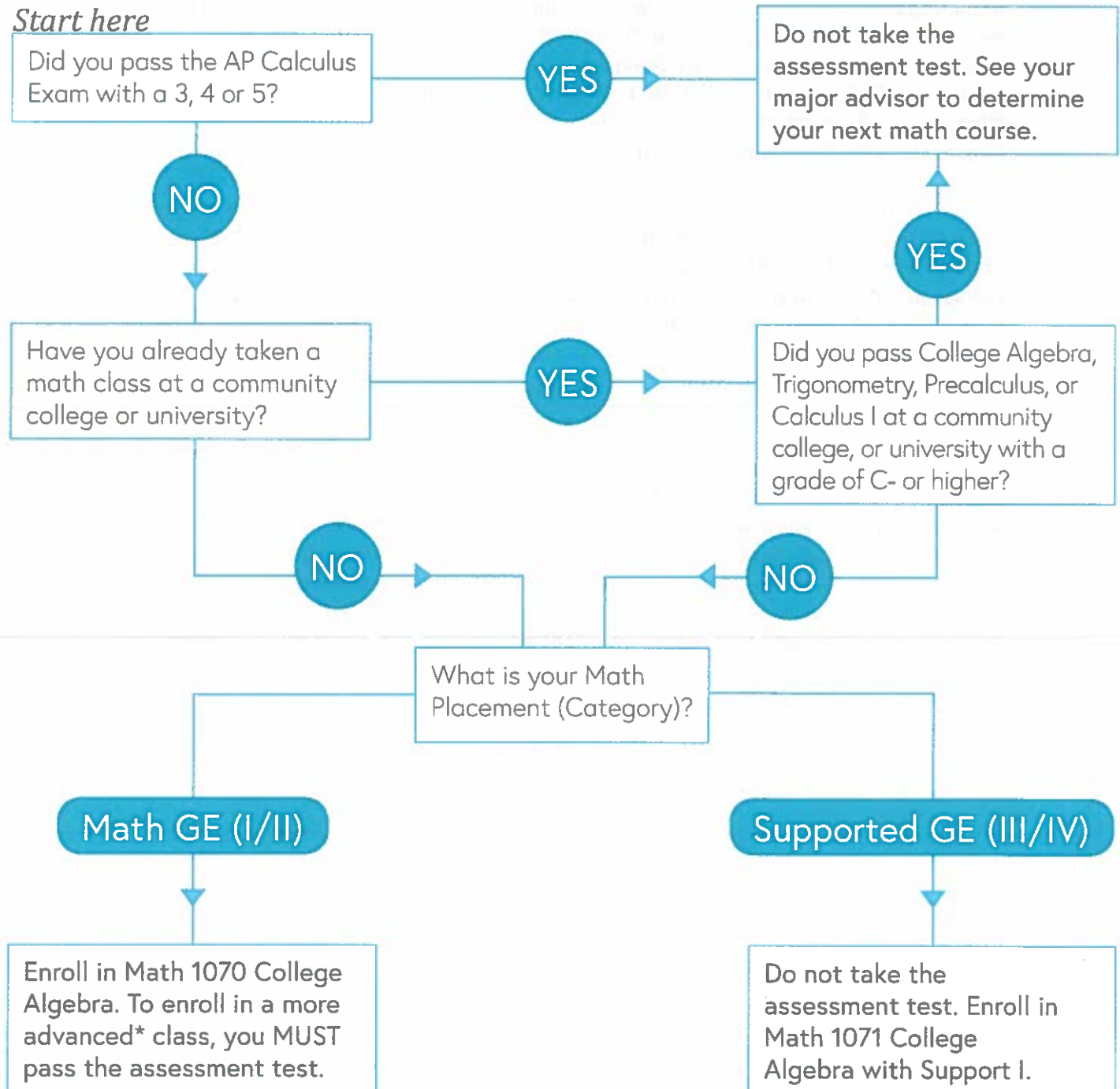
Applicable to the following majors:

Biological Sciences, Chemistry, Computer Science,
Geology, Mathematics, Physical Science, Physics,
Liberal Studies with a Mathematics Concentration

Applicable to the following minors:

Mathematics

Start here



*Math 1080 Trigonometry, Math 1100 Precalculus, Math 1410 Calculus I.

REDESIGN OF
 CSU GE SUBAREA B4
 MATHEMATICS/QUANTITATIVE REASONING



ORIGINAL COURSES

REDESIGNED COURSES W/ ADDITIONAL SUPPORT

ALL COURSES ARE UNIVERSITY CREDIT-BEARING

MATH 1000 (3)

MATH 1000 *Excursions into Mathematics* (4)*

MATH 1030 (3)

MATH 1035 *Elementary Foundations of Math with Support IA* (3)

MATH 1036 *Elementary Foundations of Math with Support IB* (3)*

MATH 1070 (3)

MATH 1071 *College Algebra with Support I* (3)

MATH 1072 *College Algebra with Support II* (3)*

MATH 1500 (3)

MATH 1551 *Finite Mathematics and Business Statistics I* (3)

+

MATH 1552 *Finite Mathematics and Business Statistics II* (3)*

MATH 1610 (3)

MATH 1553 *Finite Mathematics and Business Statistics III* (3)

MATH 1600 (4)

MATH 1601 *Statistics with Support I* (3)

MATH 1602 *Statistics with Support II* (3)*

STANISLAUS STATE G.E. SUBAREA B3 COURSE LIST:

*Satisfies Stanislaus State G.E. Subarea B3

- MATH 1000 *Excursions into Mathematics* (4)
- MATH 1030 *Elementary Foundations of Mathematics I* (3)
- MATH 1036 *Elementary Foundations of Math with Support IB* (3)
- MATH 1070 *College Algebra* (3)
- MATH 1072 *College Algebra with Support II* (3)
- MATH 1080 *Trigonometry* (3)
- MATH 1100 *Precalculus* (4)

- MATH 1410 *Calculus I* (4)
- MATH 1500 *Finite Mathematics* (3)
- MATH 1552 *Finite Mathematics and Business Statistics II* (3)
- MATH 1600 *Statistics* (4)
- MATH 1602 *Statistics with Support II* (3)
- MATH 1610 *Statistics for Decision Making* (3)

Supported GE Math

Appropriate 1st Math Class

INTENDED MAJOR	MATH 1000	MATH 1035	MATH 1551	MATH 1601	MATH 1071
Agriculture				required	
Anthropology	recommended			graduate school or research track	
Art	required				
Biological Sciences BA/BS					required
Business Administration			required		
Chemistry BA/BS					required
Child Development	recommended			graduate school	
Cognitive Studies				required	
Communication Studies				recommended	
Computer Science					required
Criminal Justice <i>Forensics concentration</i>				required	
Criminal Justice <i>All other concentrations</i>				recommended	
Economics				required	
English	recommended				
Ethnic Studies	recommended				
Gender Studies	recommended			graduate school or research track	
Geography	recommended				
Geology					required
History	recommended				
Kinesiology				required	
Kinesiology, Subject Matter Prep	recommended				
Liberal Studies		required			
Mathematics BA/BS					required
Music	recommended				
Nursing				required	
Philosophy	recommended				
Physical Science					required
Physics BA/BS					required
Political Science				required	
Psychology				required	
Social Sciences	recommended				
Sociology				recommended	
Spanish	recommended				
Theater	recommended				
Undeclared*	Non-STEM				STEM

*If you are Undeclared, MATH 1000 is recommended unless you are considering going into a STEM major, then you would start with MATH 1071.

STEM majors = Biological Sciences, Chemistry, Computer Science, Geology, Mathematics, Physical Science, Physics