

College of Science and Math (CSM) 1st Year Experience (BOND)

Data:

- Customized Tableau dashboard created by the Office of Institutional Effectiveness provides data for BOND cohort including: Retention (University and CSM), GPA, Units attempted.
- Breakdown by factors including Gender, URM, FGS, Pell, and SAT.
- Comparison available to demographically and academically matched control group.

Findings:

- Prior to Fall 19, B4-pathway course enrollment and completion were 12 percentage points higher for BOND students compared to Control Group, but the BOND enrollments (~74%) were still disappointing given the extra supports that BOND students receive.

Change made:

- BOND students block scheduled into 12-15 units (including Math) in 1st semester in F19.
- Increased outreach to students to complete ALEKS (for Math placement) and ALEKS workshops held for incoming students in Spring 19.

Impact:

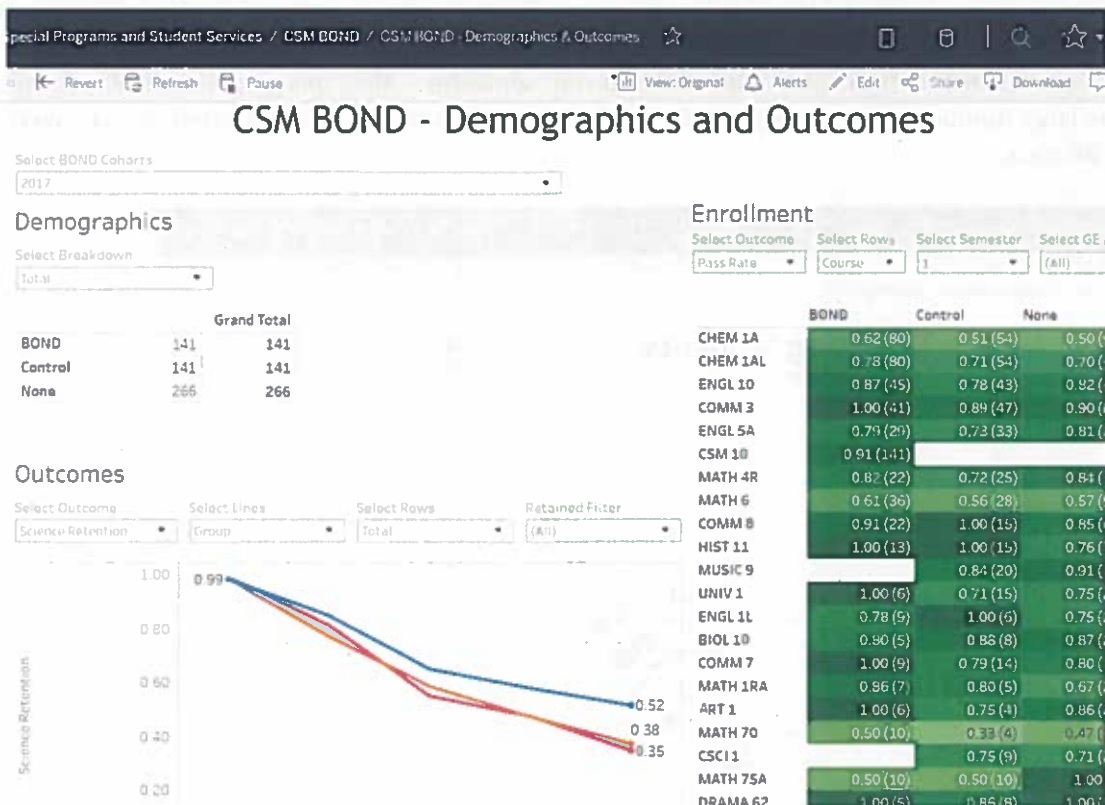
- B4-pathway course enrollment increased 16 percentage points and course completion increased 15 percentage points.

Ongoing challenges:

- Block scheduling is time consuming and pathways are complex (50+ 'cohort' blocks).
- Timely completion of ALEKS for Math placements improved but late completions continue to make block scheduling a challenge.

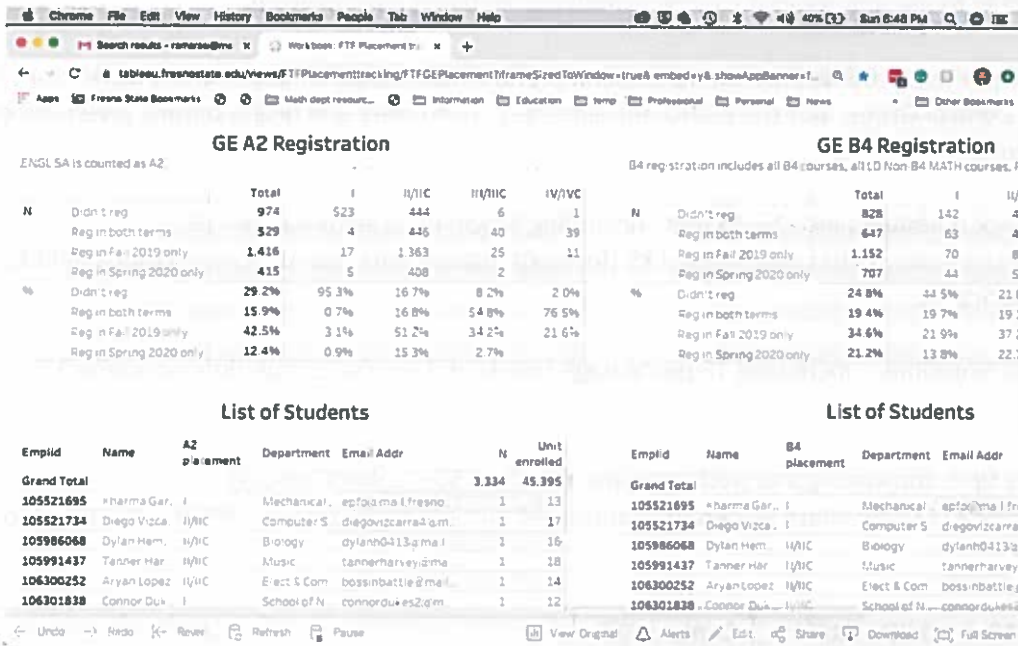
1 st Semester	BOND F19	BOND F18/F17	Control F17
Math enrollment	90%	74%	62%
Math completion	65%	50%	38%

(Math completion is the percentage of all students in the group whether they enrolled in Math or not.)



Math Department Schedule Planning

One of the most useful dashboards we used is the *FTF Placement Tracking* dashboard. This Dashboard allowed us to not only see the number of students who have not registered/taken GE B4 in their first semester but also their majors and emails. This allowed us to determine the number of expected sections we need to open based on their majors in the next semester and also, proactively contact these students and prompt them to enroll into the correct classes.



Math Department GE B4 Revisions

Another useful Dashboard is the *Targeting Students* dashboard. A visual display comparing students from different majors allowed us to see what are the problematic areas clearly and find solutions to the related issues where we should intervene. For example, identifying that a large number of Biology majors are not taking their GE B4 in their first semester compared to the other majors allowed us to look for solutions. This dashboard also allowed us to see what math course those students currently enrolled in the current semester. Also, this graphical display helped us to recognize that the large number STEM majors are placed in the third quadrant. This prompted us to convert precalculus to a GE B4 class.

